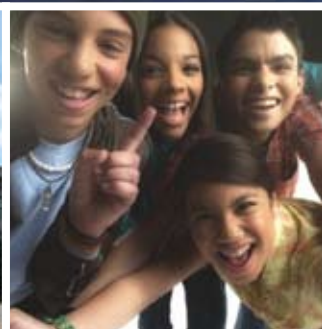
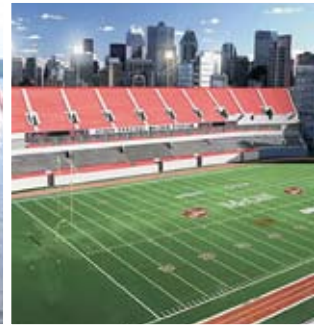




# Summer ESL Sports Camp in Montreal





## Welcome to the A.L.I. Summer ESL Sports Camp !

In collaboration with McGill University, located on the edge of Mount Royal in downtown Montreal, campers benefit from sprawling green spaces and the University's extensive athletics facilities. Experienced and qualified instructors take pride in ensuring that each child benefits from a positive exposure to sport, physical activity and ESL. Our Summer ESL Sports Camp is designed for children 8-15 years of age.

### ✦ The Camp day

The program offered is divided into four areas of specialization (sports, aquatics, creative activities and ESL). Activities are carefully scheduled and structured to accommodate camper age, aptitude, ability and interest. In each area, instruction and

supervised play are built into the activities. Throughout the summer, theme days, special sports clinics and barbecues are planned. Swim instruction is conducted daily, based on the progressive Olympic Way Program.

### ✦ ESL Classes

Students receive 15 hours of ESL instruction per week including homework. Students are divided into level and age specific groups. Classes focus on all four skills: Speaking, listening, writing and reading. Our teaching approach is communicative and very interactive. All our instructors are university graduates and experienced in teaching Kids.

### ✦ Staff

Members of our bilingual staff are carefully chosen based on the necessary skills and qualifications to teach children of all ages. Staff members have a strict concern for child safety and are instructed in first-aid procedures.



A.L.I. Team.



Typical residence room





### ✦ Sports Facilities

- ✦ Molson Stadium, an Olympic facility with an artificial turf playing field and a 400-meter synthetic running track.
- ✦ Four outdoor tennis courts, and 12 squash courts.
- ✦ Various grass fields, four gymnasias and an indoor track.
- ✦ Indoor tennis, basketball and volleyball courts.
- ✦ Dance, wrestling, judo and gymnastics rooms.
- ✦ An eight-lane, 25-meter indoor pool.
- ✦ A first-aid centre.
- ✦ McConnell Skating Arena.

### ✦ Residence Facility: Bishop Mountain Hall

Our Residence located on camp grounds is supervised 24 hours per day by both male and female responsible and experienced guardians to ensure a safe and fun experience for all our kids.

- ✦ The rooms are private single study bedrooms.
- ✦ Each room is provided with fresh linens, towels and soap.
- ✦ Daily housekeeping is provided with linen and towel changes.

- ✦ The washrooms are shared amongst the campers and are located just a few steps away from each room.
- ✦ Our residence has laundry services, kitchenettes, a lounge, and a TV room.
- ✦ Computers with free access to the Internet are available to our campers at the front desk as well as in the Study Rooms.

### ✦ Activities and week-end excursions

Weekly activities are organized after camp to local tourist and cultural attractions. One trip per week-end is planned to exiting sites

such as : Quebec City, Toronto / Niagara Falls and La Ronde amusement park.\*

\*(An optional 3 day camping trip is also planned during the summer).



Student lounge



Molson Stadium



[www.studymontreal.com](http://www.studymontreal.com)

**A.L.I. - Académie Linguistique Internationale**  
1425 René-Levesque West - suite 800,  
Montréal, Québec, Canada, H3G-1T7.  
**Tel: 1+514 270 3886 - Fax: 1+514 270 6363**  
**info@studymontreal.com**

**Agent stamp:**

